

## My Insight Trader Chart Arrangement

The way in which I look at charts of stocks is based on a template. The stock I use for my template is Telstra (TLS), but any stock could be used. Just replace TLS with another stock code in the instructions for creating the template. It is a good idea to choose a stock which has many years of past price data and which is unlikely to go out of business and be delisted.

My template saved chart arrangement is in the form of two maximised saved charts of a stock. The active chart is the monthly chart and the other one is the weekly chart. I do it this way because best practice is to start with the long term picture, hence the monthly chart, and then work down to the chart that is applicable to my timeframe as an investor. My time frame is the weekly chart, so that is the inactive chart in the arrangement, which I go to once I have analysed the monthly chart. Traders might have an appropriate time frame of daily, in which case they need to have three charts in their template – the monthly chart (active), the weekly chart and the daily chart. I have not given instructions below for a daily chart, but the basic method is the same for my weekly chart, except they may require only a few weeks or months of data on the screen, so make the appropriate adjustment to suit your methods.

My template is shown below, monthly chart first and weekly chart second:



Continued next page...



First, an important note of explanation:

My instructions below are for most PCs, which may not have as good a screen resolution as my PC. I now have a wide screen (1920 x 1080 resolution), which allows more bars to be displayed well. I also use an external monitor with this resolution. For the weekly chart arrangement, I am using 1770 periods (five years) and for the monthly chart arrangement I am using 7300 periods (20 years). These x-axis parameters may not be suitable for screens with a lower resolution. **So, although I have shown my template charts above, the instructions below are for PC screens with a lower resolution than mine. They should be OK for most Insight Trader users.** I will illustrate the resulting charts as I go through the instructions and note what to change to obtain my template above.

Below are the instructions for creating the Saved Chart Arrangement which I use in Insight Trader charting software, subject to the explanation in the previous paragraph.

### Set Preferences

Launch Insight Trader

Format

Preferences

in White space before chart axis, enter 30

Tick Logarithmic

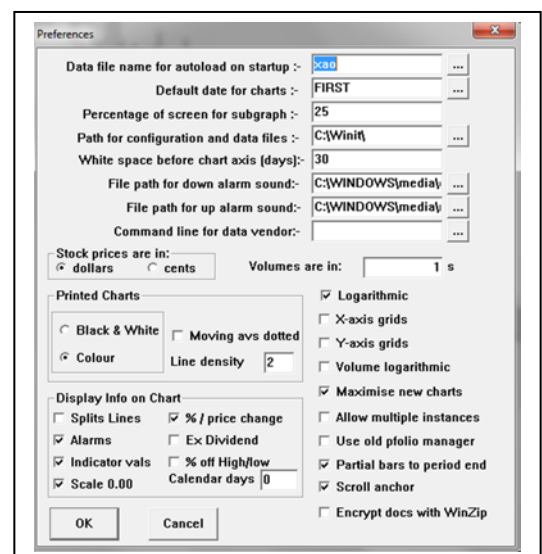
Tick Maximise new charts

Tick Partial bars to period end

OK

Save configuration - click Yes

My Preferences dialog box is shown at the right. The settings in my instructions above are the ones



Copyright © Colin Nicholson. You may email this PDF file unaltered in any way to friends and invite them to join the list by going to the [Newsletters](http://www.bwts.com.au) page on [www.bwts.com.au](http://www.bwts.com.au) and clicking on the relevant link. Please seek my permission to publish all or part of this PDF file in any other way. This document does not purport to be advice of any kind to any reader. It is intended as a tool for teaching investment through practical examples and using as a basis my investment plan as set out in *Building Wealth in the Stock Market*. This document has been prepared without knowledge of or regard to the financial plans of any other person. Readers should consult licensed financial, legal and taxation advisers before acting on anything in this document. I am not a licensed adviser.

needed to create my chart arrangement. Other settings will vary for each user depending on their likes and dislikes and whether their database is in dollars or cents (mine is in dollars).

### Create Saved Chart Arrangement

Click the Quick Chart icon (first from the left)

V (to remove volume if not required)

N

Enter TLS in File Required (or a stock code of your choice)

Click OK

Shift + WX

S

In From (ddmmyy)=, type -1500 (substitute -1770 to get my exact template chart that was shown earlier)

Tab

In To (DDMMYY)=, type @+4

Click OK

This will have created the weekly chart template, which should look as shown on the next page (1500 periods):



Click Add New Chart icon (the second icon from the left)

In Code to Load type TLS (or a stock code of your choice)

Make sure Chart in New Window is selected

Click OK

Shift + M

X

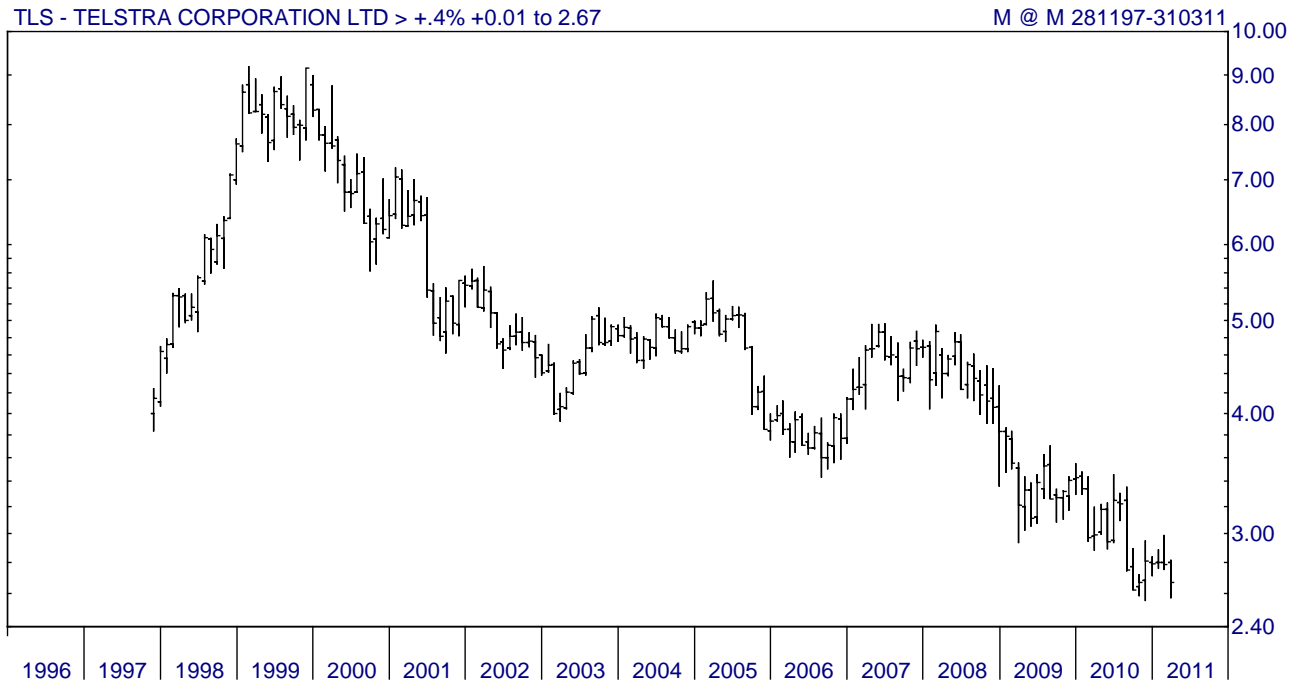
S

In From (ddmmyy)=, type -5500 (substitute -7300 to get my exact template chart that was shown earlier)

Copyright © Colin Nicholson. You may email this PDF file unaltered in any way to friends and invite them to join the list by going to the [Newsletters](http://www.bwts.com.au) page on [www.bwts.com.au](http://www.bwts.com.au) and clicking on the relevant link. Please seek my permission to publish all or part of this PDF file in any other way. This document does not purport to be advice of any kind to any reader. It is intended as a tool for teaching investment through practical examples and using as a basis my investment plan as set out in *Building Wealth in the Stock Market*. This document has been prepared without knowledge of or regard to the financial plans of any other person. Readers should consult licensed financial, legal and taxation advisers before acting on anything in this document. I am not a licensed adviser.

Tab  
 In To (ddmmy), type @+30  
 Click OK

This will have created the monthly chart template, which should look as shown on the next page (5500 periods):



Windows

Save Arrangement

Type in five spaces, then Template (the spaces force this arrangement to the top of the Saved Chart Category, use more spaces if you need to)

Click OK

### Further Instructions

Copy this saved chart arrangement into each of your Saved Chart Categories, if you use more than one.

When saving the chart arrangement, it is best to make the monthly chart the active one, so that it comes up first when you open the template. That was what happened the way I wrote the instructions, but if you work with the template later to clone saved charts, you may not have the monthly chart as the active one. To switch between the monthly and weekly charts in the chart arrangement use the right and/or left arrow keys. The chart on screen is the active one.

To reach the template at any time Insight Trader is open: Alt + Q

To clone a new saved chart from the template after you have opened it:

Ctrl+N

ASX stock code e.g. BHP

Copyright © Colin Nicholson. You may email this PDF file unaltered in any way to friends and invite them to join the list by going to the [Newsletters](http://www.bwts.com.au) page on [www.bwts.com.au](http://www.bwts.com.au) and clicking on the relevant link. Please seek my permission to publish all or part of this PDF file in any other way. This document does not purport to be advice of any kind to any reader. It is intended as a tool for teaching investment through practical examples and using as a basis my investment plan as set out in *Building Wealth in the Stock Market*. This document has been prepared without knowledge of or regard to the financial plans of any other person. Readers should consult licensed financial, legal and taxation advisers before acting on anything in this document. I am not a licensed adviser.

Enter

Ctrl+S

In the dialog box type the name you wish for the new saved chart arrangement

Click OK

If at any time you want to change or to add something to a saved chart arrangement:

Open the saved chart arrangement

Make the change or add the new information (e.g. a key level on your chart)

Make the monthly chart the active one (arrow keys)

Ctrl+S

At this point there are two alternatives:

If it is simply a change to the existing saved chart arrangement with the same name:

A

Click OK

If it is to be a new saved chart arrangement:

N

edit the existing name for the saved chart arrangement to the desired new name

Click OK