

How to Create My Insight Trader Chart Arrangement

In my first iteration of this article, I explained how I create my template chart arrangement. Since then, I have added a daily chart to the monthly and weekly charts that made up the original template. I have done this to facilitate looking at a daily chart when necessary. This is, in fact not necessary very often because the weekly chart is my action timeframe and using daily charts opens a great temptation to act on chart action in a shorter timeframe than is called for in my investment plan. The event that precipitated this change to my template chart arrangement was the demergers of Recall Holdings and Orora. As I was a shareholder in Brambles and Amcor at the time, I received shares Recall Holdings and Orora. Since I needed to make decisions about holding or selling these stocks and there was no trading history for them, the monthly and weekly charts would for quite some time be relatively few bars and therefore not very useful. I needed to be using the daily charts for my decision making, albeit with great attention to the timeframe, hence the decision to alter my template. Changing the template to three charts instead of two exposed some issues in the way *Windows*, and therefore *Insight Trader*, operate that needed to be solved. Bernard Chapman was a great help to me in this.

The way in which I look at charts of stocks is based on a template. The stock I use for my template is Telstra (TLS), but any stock could be used. Just replace TLS with another stock code in the instructions for creating the template. It is a good idea to choose a stock which has many years of past price data and which is unlikely to go out of business and be delisted.

My template saved chart arrangement is in the form of three maximised saved charts of a stock. The active chart is the monthly chart and the other two, in the order in which they rotate are the weekly chart and the daily chart. I do it this way because best practice is to start with the long term picture, hence the monthly chart, and then work down to the chart that is applicable to my timeframe as an investor. My time frame is the weekly chart, so that is the next inactive chart in the arrangement, which I go to once I have analysed the monthly chart. I have now found a need to have the daily chart in my template for occasional use and for newly listed stocks as explained above, so it is now incorporated into these instructions, providing the third inactive chart in the chart arrangement.

My template is shown below, monthly chart first, weekly chart second and daily chart third:

TLS - TELSTRA CORPORATION LTD > -1.4% -0.07 to 5.01

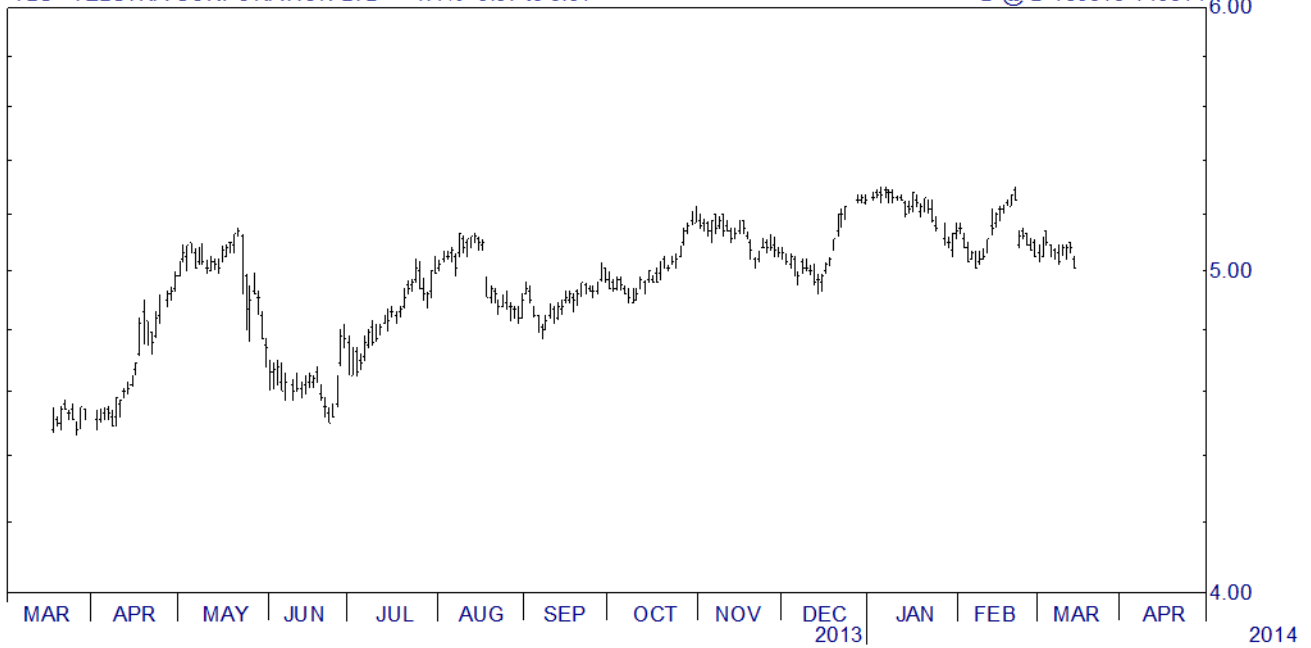
M @ M 281197-310314



TLS - TELSTRA CORPORATION LTD > -1.4% -0.07 to 5.01

W @ W 270309-140314





First, an important note of explanation:

My instructions below are for most PCs, which may not have as good a screen resolution as my PC. I now have a wide screen (1920 x 1080 resolution), which allows more bars to be displayed well. I also use an external monitor with this resolution. For the monthly chart arrangement I am using 7300 periods (20 years), for the daily chart arrangement, the weekly chart arrangement, I am using 1825 periods (five years) and for the daily chart arrangement I am using 365 periods (1 year). These x-axis parameters may not be suitable for screens with a lower resolution, which does pose a problem, because to show fewer periods would force a shorter-term view than I find desirable for my investment plan.

Below are the instructions for creating the Saved Chart Arrangement which I use in Insight Trader charting software.

Set Preferences

Launch Insight Trader

Format

Preferences

in White space before chart axis, enter 30

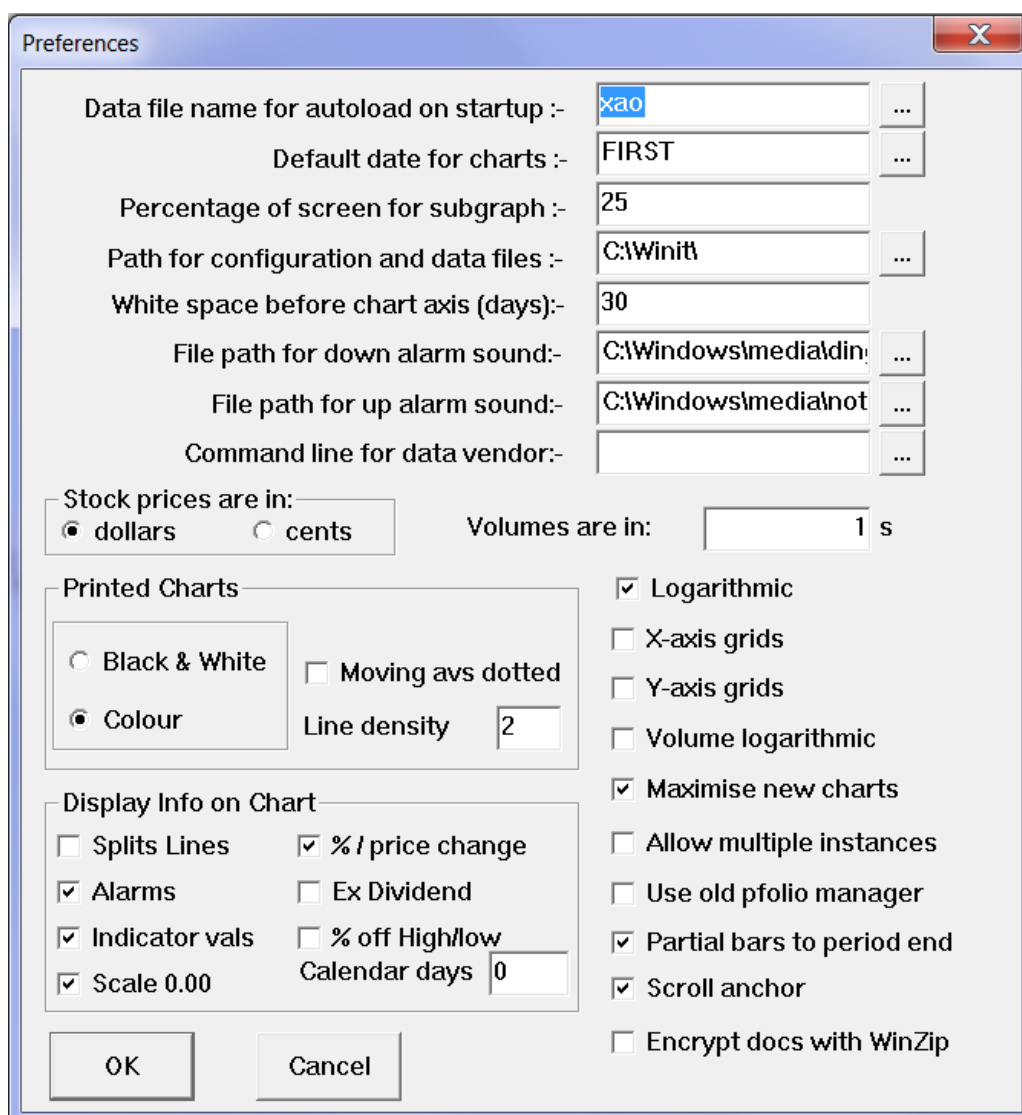
Tick Logarithmic

Tick Maximise new charts

Tick Partial bars to period end

OK

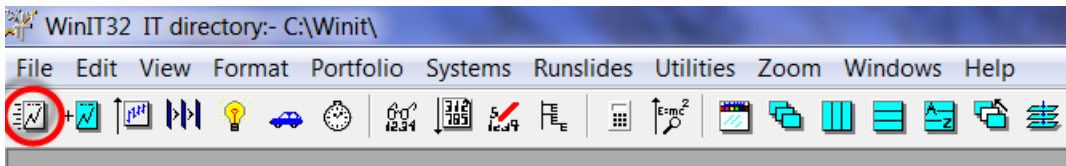
Save configuration - click Yes



My Preferences dialog box is shown above. The settings in my instructions above are the ones needed to create my chart arrangement. Other settings will vary for each user depending on their likes and dislikes and whether their database is in dollars or cents (mine is in dollars).

Create Saved Chart Arrangement

Click the Quick Chart icon:



V (to remove volume if not required)

N

TLS

OK

Shift + M

X

S

-7300

Tab

@+30

OK

A

E

Tab

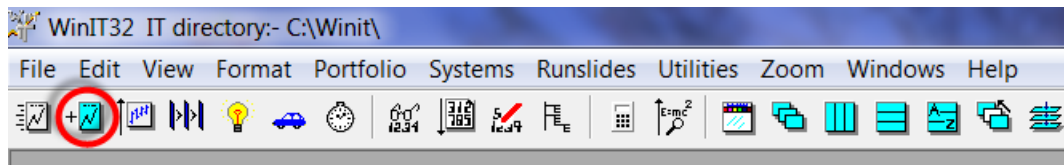
12

OK

This will have created the monthly chart template, which should look as shown below:



Click Add New Chart icon:



TLS

Make sure Chart in New Window is selected

OK

Shift + W

X

S

-1825

Tab

@+30

OK

A

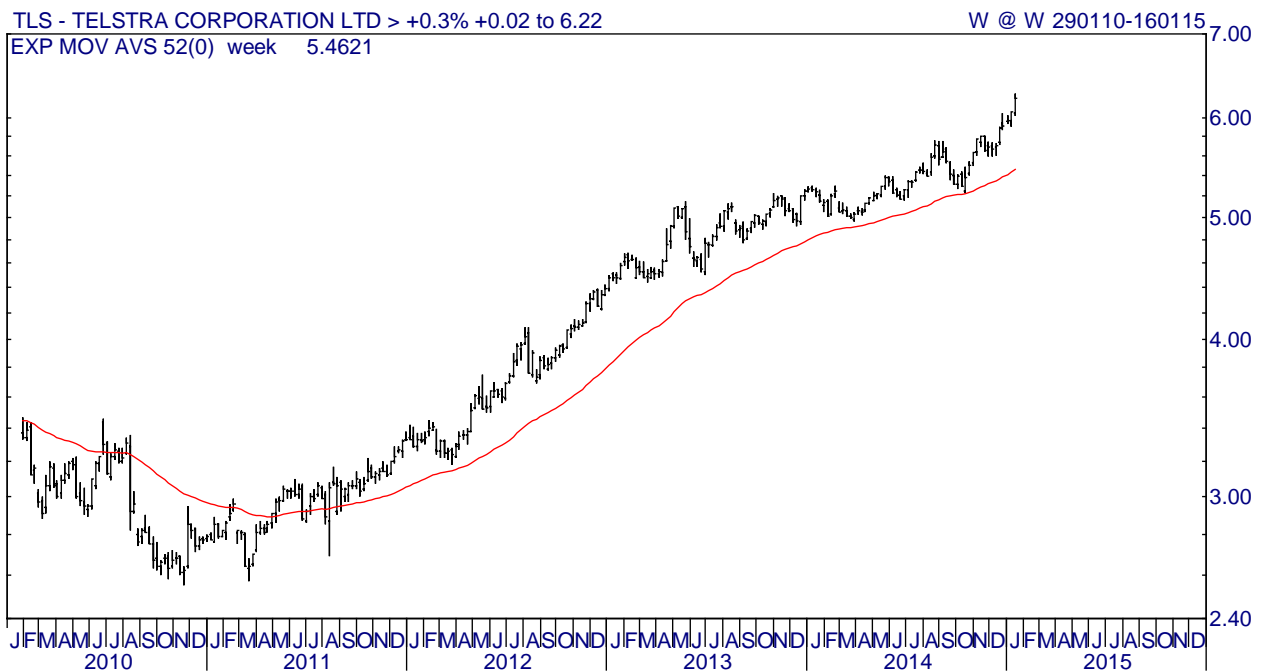
E

Tab

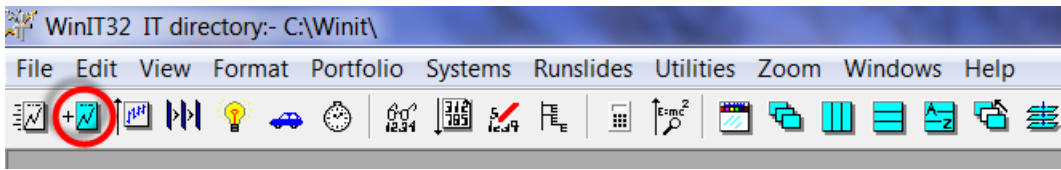
52

OK

This will have created the weekly chart template, which should look as shown below:



Click Add New Chart icon:



TLS

Make sure Chart in New Window is selected

OK

Shift + D

X

S

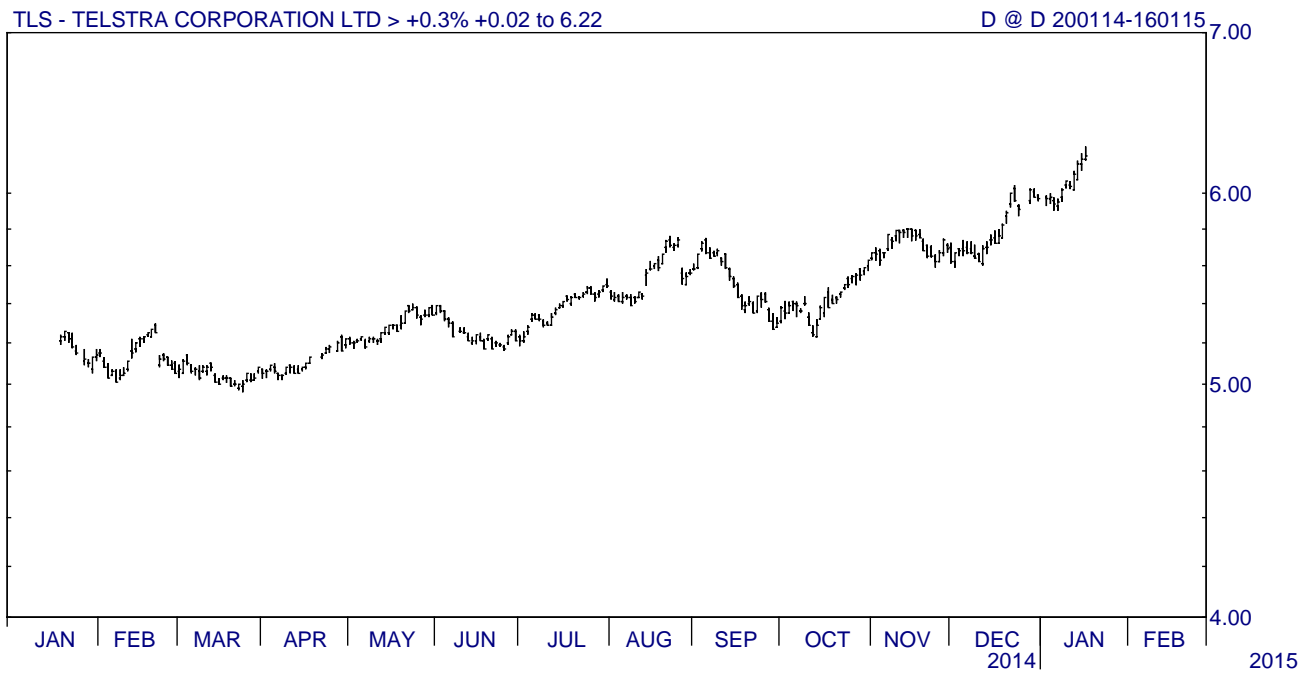
-365

Tab

@+30

OK

This will have created the weekly chart template, which should look as shown below:



Note

I do not have a moving average on this chart in the template, but to add it the steps are:

A

E

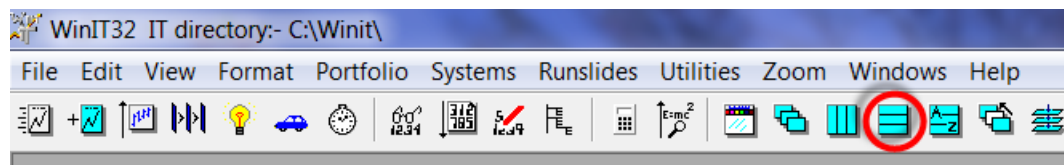
Tab

260

OK

Save the Chart Arrangement as Your Template

Click the Horizontal tile icon:



Click the caption bar for the D@D chart

Click the caption bar for the W@W chart

Click the caption bar for the M@M chart

Ctrl+S

N

Type in five spaces (the spaces force this arrangement to the top of the Saved Chart Category, use more spaces if you need to)

Give it the name Template

OK

Now, after opening the Template or any saved chart arrangement cloned from it, it should show the monthly chart first. To switch between the monthly and weekly charts in the chart arrangement use the right and/or left arrow keys. The chart on screen is the active one.

To Clone the Template Chart Arrangement

Copy this saved chart arrangement into each of your Saved Chart Categories, if you use more than one.

To reach the template at any time Insight Trader is open: Alt + Q

To clone a new saved chart from the template after you have opened it:

Ctrl+N

ASX stock code e.g. BHP

Enter

DO NOT ROTATE THE CHART ARRANGEMENT BEFORE SAVING IT

Ctrl+S

N

In the dialog box type the name you wish for the new saved chart arrangement

OK

If at any time you want to change or to add something to an existing saved chart arrangement:

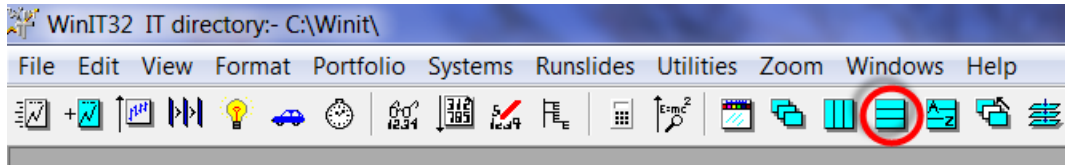
Open the saved chart arrangement

Make the change or add the new information (e.g. a key level on your chart)

Then:

Save the Chart Arrangement

Click the Horizontal tile icon:



Click the caption bar for the D@D chart

Click the caption bar for the W@W chart

Click the caption bar for the M@M chart

Ctrl+S

A

OK

Take these same steps if at any time you alter the Template (or any saved chart arrangement cloned from it) and re-save it. This saving sequence ensures that the template will open at the monthly chart and then rotate in the correct order.